



Patent:
ZL 2006 2 0122522.X
Nr.20 2006 012 052.1
M308308
GB 06 16099.8
06 07229 (France)

Features

- Holding force up to 800lbs
- MOV provides spike and surge protection
- Aluminum anodized casing
- Mounting plate & housing for easy installation
- Dual voltage 12 or 24 VDC (selectable)
- Anti-Residual magnetism function

Statement

EM-NH350 is designed for surface mount on out-swing doors. Its slide-in mounting plate simplifies the process of installation and firmly secures the magnet. EM-NH350M comes with magnetic bond sensor indicating locked and unlocked status.

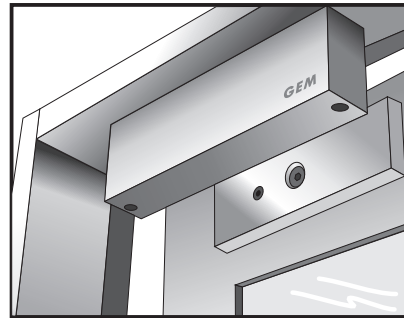
Specification

- Operating Voltage: 12/24 VDC
- Current Draw: 500mA/12VDC; 250mA/24VDC (at 20°C)
- Operating Temperature: -10~55°C (14~131°F)
- Humidity: 0~95% non-condensing.
- Holding Force: Up to 800 lbs (363 Kg)
- Dimensions:
 - Magnet: (L) 265, (W) 52, (D) 29 mm
 - Armature Plate: (L) 185, (W) 45, (D) 14 mm
 - Mounting Plate: (L) 265, (W) 29, (D) 6.5 mm
- Finishes for magnet and armature plate: Zinc plated
- Epoxy Potting Compound: E87252 (S), UL94V-0
- Net Weight: 3.0 Kg

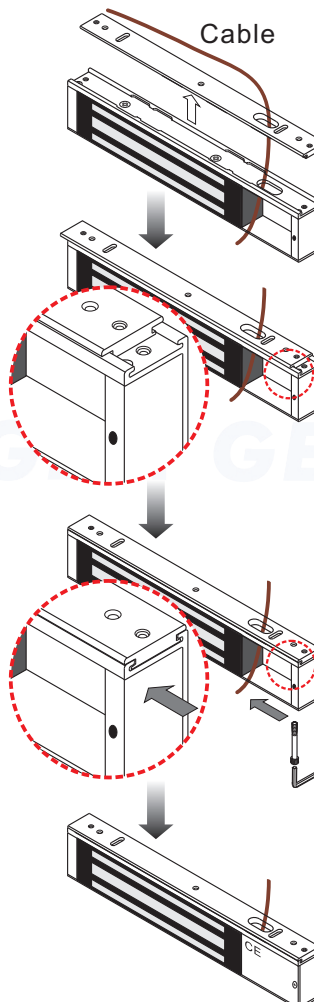
Warranty

The product is warranted against defects in material and workmanship while used in a normal service for a period of 5 years from the date of sale to the original client. The company policy is one of continual improvement; therefore the company reserves the right to change specifications without notice.

Regular Installation



Special Mounting Plate design



1.Pass the power cable through the mounting plate and the hole of the maglock.

2.Place the mounting plate above the maglock. Leave a length of 1 cm from either end of the maglock.

3.Slide the mounting plate into the maglocks. Fit the maglock from the bottom to the mounting plate.

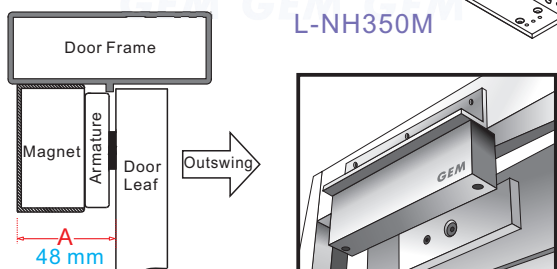
4.Use the Allen wrench and fixing screws to tighten the mounting plate and maglock.

Optional Brackets

Bracket installation is according to door swing direction and door frame type, e.g. narrow frame door, frameless glass door, inswing door, etc.

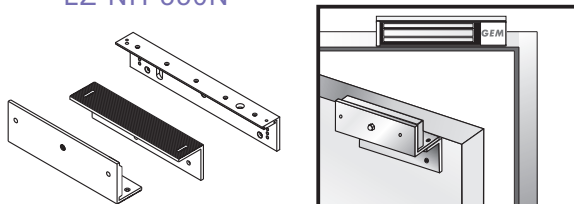
L-bracket for narrow door frames

When "A" < 48 mm, must install with "L" brackets.



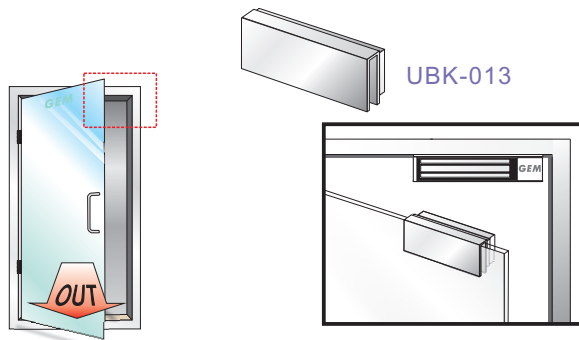
LZ-bracket for inswing doors

LZ-NH-350N



U-bracket for frameless glass doors

UBK-013 For 10~12mm thickness of glass door



Operating Features

xxxxx-M: Bond sensor output



Bond sensor output
SPDT rated: 0.5A/125VAC; 1A/24VDC

Indicate the locked & unlocked status with visible LED indicator.

Trigger



Timer Adjust
Shorten

xxxxx-TD: Relock time delay

Ensure the automatic lock mode after the door is closed properly and it can be adjusted from 1 to 80 seconds.

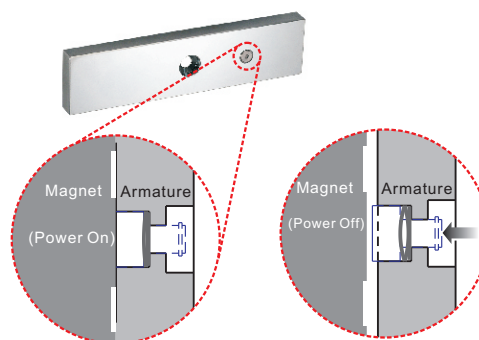
xxxxx-DS: Door status



Door status output
SPDT rated: 0.2A/12VDC

Door Status Sensor indicates the door is in an open or closed status.

Anti-residual statement



Anti-residual statement

Our electromagnet locks feature Anti-Residual Magnetism (ARM) which ensures the door can be opened without any resistance from left over magnetism imparted to the armature plate